

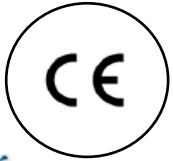
Sensismooth

TRAINING

SENSICA

Sensismooth device

Pedicure. Facial cleansing. Body exfoliations.



YOUR HOME SPA ALL IN ONE!

Sensismooth is an all-in-one device for multiple treatments.

Adapt2U™ Technology

- Worlds' 1st body care system that adapts itself to your unique body curves
- Innovative Sensica Adapt2U™ technology has revolutionized the experience and effectiveness of home body peeling and cleansing. The flexible snap-on pads continuously adjust to the shape of the treated area, allowing you to achieve professional-grade results that you can see and feel after the very first treatment.
- Sensismooth pads are designed especially to adapt to each body's unique shape, so you can reach and treat every inch of your skin. The snap-on pads move dynamically and multi-dimensionally, allowing you to achieve more consistent results over the entire area



Safe: Adapt2U™ safety mechanism stops the device when pressed too hard on the body



MY HOME SPA
ALL IN ONE!

- Suitable for all skin types
- 100% waterproof! Can be used in the shower or bath
- 3 sets of pads for different treatments - cleansing, pedicure, peeling
- Adapt2U™ pads
- Cordless
- 2 adjustable speeds
- Rechargeable battery
- Weeks of work with just 3 hours charge!

Sensismooth

Device description



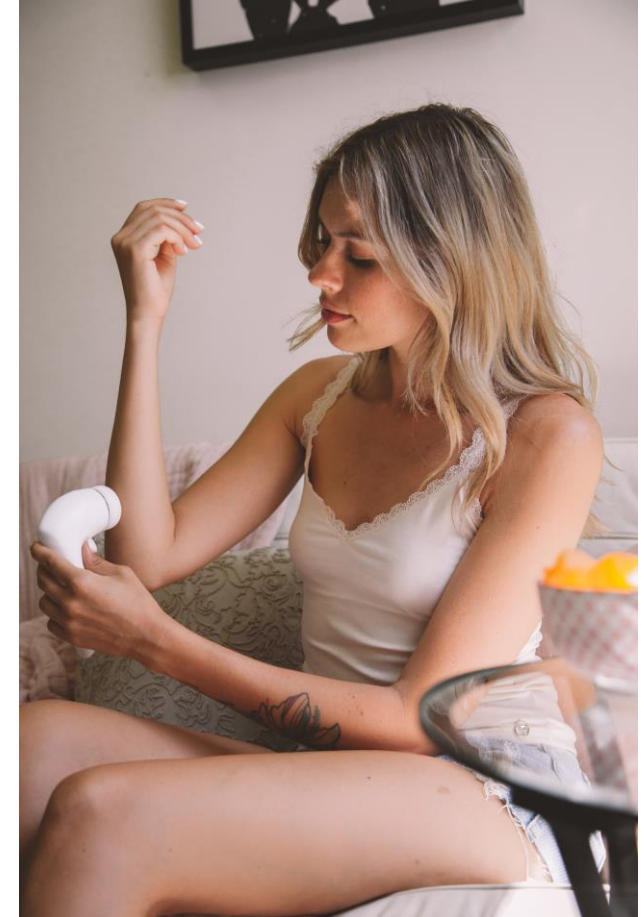
Cleanse kit

- Cleans your pores gently without abrasion, from left over make-up residue and daily build-up
- Adapt2U™ pads, flexible and more sensitive to your needs
- Smoother skin
- Smaller pores
- Fewer fine lines
- Radiant skin
- Rejuvenates your skin appearance, regardless skin tone and complexion
- Gently and safely buffs away dead skin cells
- Makes your skin care products absorb much better
- Great results just in a few minutes



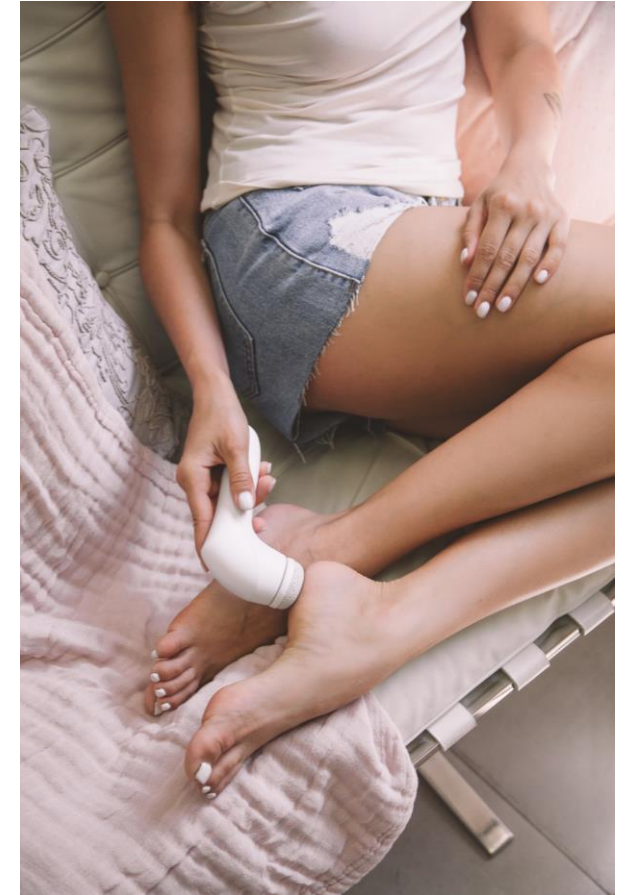
Exfoliate kit

- Homogeneous body exfoliation, even at the curviest areas like around your elbows, knees and ankles
- Perfectly adapt to your body's angles and curves
- Rejuvenates every inch of the body, for more youthful and radiant appearance, regardless skin tone and complexion
- Gently and safely buffs away dead skin cells and dry patches for silky-smooth and fresh skin
- Professional-grade results just in a few minutes



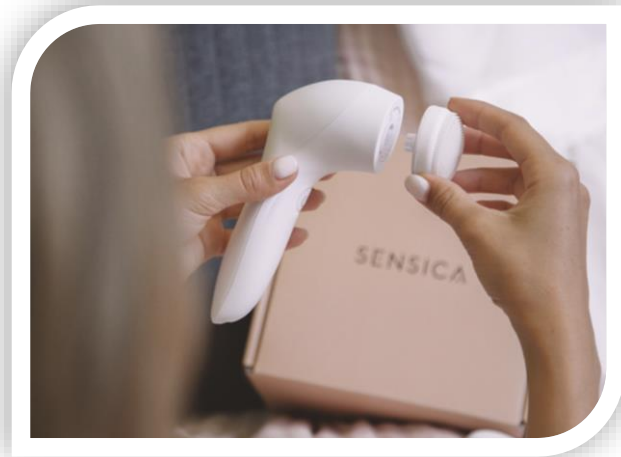
Pedicure kit

- With Adapt2U pads, only as much callused skin as necessary is removed, and this is not done aggressively.
- Cleans the feet effectively, removing dead skin and working against exhausted feet
- The result of the pedicure gets extended
- Will leave you with silky smooth feet
- Designed for treating entire foot—from toes to heel
- Selection of two pads – Gentle pad and coarse pad for removing harder, callused skin.
- Instant results – skin feels smoother and softer from the very first treatments

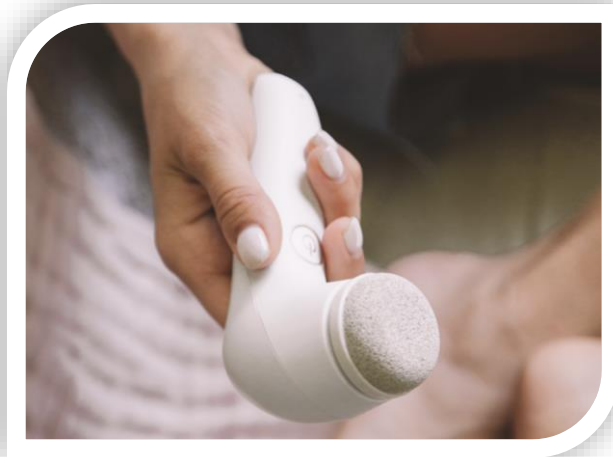


How to use

1. Choose the pad for the treatment you wish to perform and snap it onto the device.



2. Choose the speed level that is most comfortable for you.



3. Glide the Sensismooth device over the treatment area, maintaining continuous contact between the device and your skin at all times.



- Always begin with the lowest speed level and increase if it feels comfortable
- Make sure not to press too hard on the body. Sensismooth is equipped with a safety mechanism that stops the device if too much pressure is applied on the body



Thank you.